

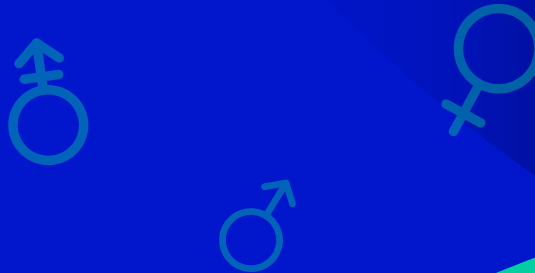
Partners

1. SOSU Østjylland – Denmark
2. Domspain SLU – Spain
3. p-consulting.gr – Greece
4. University of Aveiro – Portugal
5. European Institute for Diplomacy and Policy – The Netherlands
6. UCL Erhvervsakademi & Professionshøjskole – Denmark
7. Eurosuccess Consulting Limited – Cyprus
8. WISAMAR Bildungsgesellschaft Gemeinnützige – Germany
9. Gospodarska Zbornica Slovenije – Slovenia



GUIDE!

Upgrading the skills of professionals for gender-sensitive career guidance!



Co-funded by
the European Union

Funded by the European Union. Views and opinions expressed are however those of the author(s) only and do not necessarily reflect those of the European Union or the European Education and Culture Executive Agency (EACEA). Neither the European Union nor EACEA can be held responsible for them.

GUIDE

for gender equality in career guidance!

www.guideproject.eu



What we Aim for!

GUIDE focuses on the issue of gender and career development and the continuing barriers to achieving equality of opportunity in this area. For this purpose, Career Guidance Professionals (CGP) must adopt a gender-sensitive approach and avoid using stereotypes when supporting individuals in their career decisions.

Our aim is to help career counsellors move away from traditional role-based biases that can limit their choices, with the aim of ensuring gender equality in the opportunities that are offered to all genders, not to mention the perspective of talent, ability, and resources. We will ensure that all genders are able to choose opportunities on the basis of interest and ability rather than gender.

GUIDE will develop a set of learning resources and methods and make it available to CGPs, universities, and other training providers to support all genders in making career decisions without using gender stereotypes.

Target Groups

- Professionals in career guidance / Career counsellors / Advisors.
- Organisations working in the field of career guidance.
- Centers of Educational and Counselling Support / Career Guidance Bureaus of Universities.
- Teacher / Trainers in higher education with career guidance responsibilities / VET teachers / trainers with career guidance responsibilities.
- Young people / Students in Universities and other educational institutions.
- Adult and VET training institutions.
- Relevant stakeholders / Public and private career guidance stakeholders.
- NGOs and organisations in the field of gender equality.
- Public authorities in with career guidance responsibilities.
- Centers for Promotion to Employment / Job Finding Bureaus.

Project Results

- Identification of stereotypes.
- Styles for making career decisions.
- Online Training Programme in Gender - Sensitive Career Guidance.
- Gender - Sensitive Career Guidance Toolkit.

